

Where we are at

The fine weather over the last few weeks has allowed Maltby Land Surveys to make good progress on the channel and structure cross sectional survey recently. The survey of the Owenboy River is now complete and construction of the hydraulic computer model of the river has begun.

The main area of focus for the survey teams at the moment is the River Lee and its tributaries downstream of Inishcarra (including the Owennagearagh, Shournagh, Martin, Blarney, Bride and Curragheen rivers). However the bad weather we experienced in February and March has delayed the completion of the survey until the middle of June.

During the last month we have been looking at the issue of climate change and future land use change in the catchment. Using international research and existing information we will be identifying the most likely future scenario for both climate and land use change. This will allow us to assess the impact of these future changes on flooding in the catchment. Details of this work will be included in a Focus On section during the summer.

Next issue

In the next issue of the newsletter we will be focussing on the computer modelling of the rivers in the Lee catchment. The computer modelling of the rivers is a key part of the study and will continue over the summer months.

The next issue of the newsletter will be available at the end of May.

The Gateway of Macroom Castle



Mausoleum at Dunisky



Contact details

If you have any questions or require any further information relating to this study or if you would like to be included on a distribution list for future issues of this newsletter please email LeeCFRAMStudy@opw.ie

Further information is also available on our project website at www.leecframs.ie

LEE CATCHMENT FLOOD RISK ASSESSMENT AND MANAGEMENT STUDY

Newsletter - 08
April 2007

Malcrow



Introduction

Welcome to the eighth edition of the Lee CFRAM Study Newsletter. In this month's newsletter we focus on the Environmental Scoping Report, which has just been published on our website. The map insert on the right is taken from the report and shows the scenic routes and scenic areas within the Lee Catchment

We also provide a brief update on the progress of the channel and structure cross sectional survey and the other main areas of work during the last month.

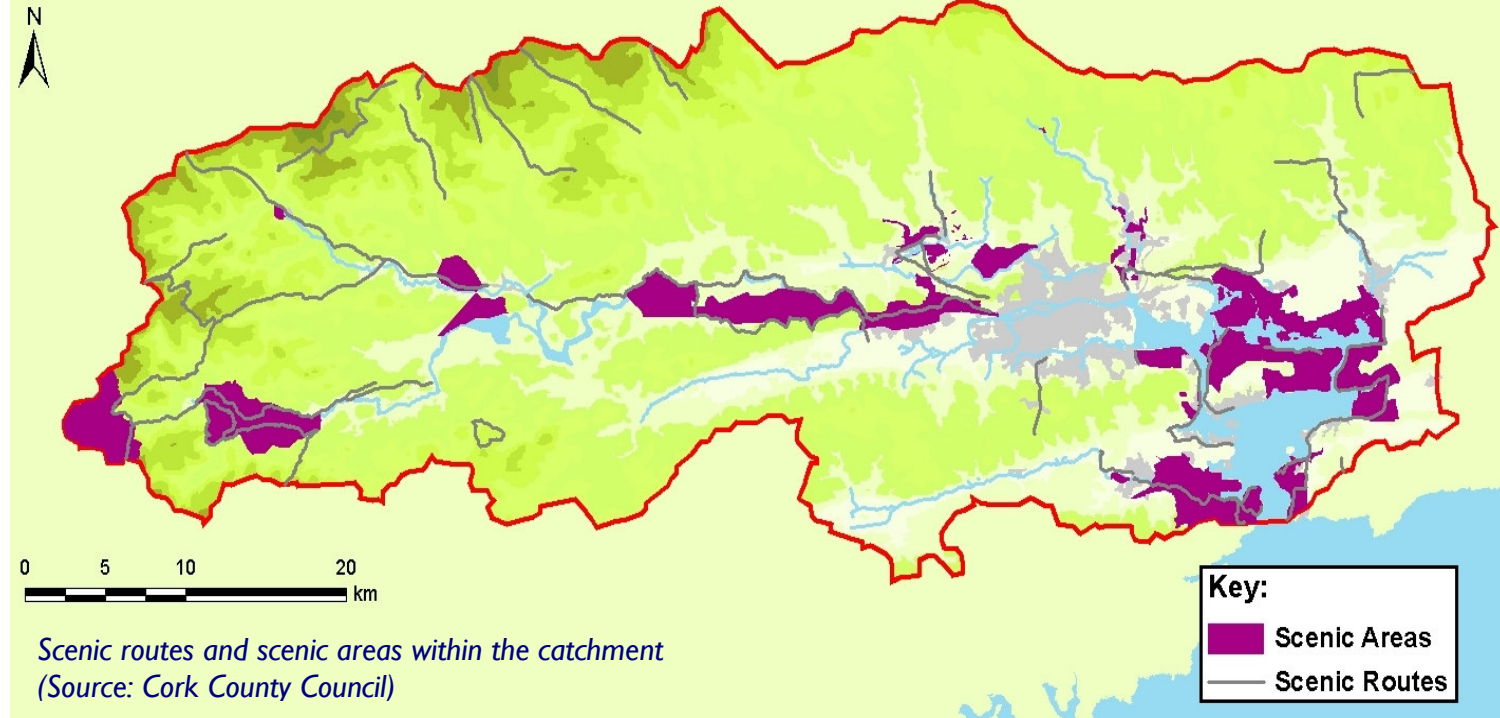
You can keep up to date on the progress of the project by visiting our project website at www.leecframs.ie

Focus On

Environmental Scoping Report

We are undertaking a Strategic Environmental Assessment (SEA) as part of the development of the Lee Catchment Flood Risk Management Plan (CFRMP) to ensure that the recommendations of the final plan are environmentally appropriate and potential opportunities for environmental enhancement are identified.

We have produced an Environmental Scoping Report to document the outputs from the first stages of the SEA process. This report describes the environmental characteristics of the Lee Catchment based on a review of available information and relevant external plans, strategies and projects. This report then presents our initial understanding of the key environmental issues and constraints within the catchment relevant to flooding and its management and identifies a set of proposed environmental objectives for the study based



*Scenic routes and scenic areas within the catchment
(Source: Cork County Council)*

on the identified key environmental issues. These environmental objectives will be used in the next stages of the study to: (1) inform the identification and development of potential flood risk management options; and (2) evaluate the identified options to identify the preferred strategic options.

This report is a statement of our understanding of the catchment at the present time. This will develop as the project progresses and will be informed by the views and knowledge of external stakeholders and the general public.

The Environmental Scoping Report is available to download from our website www.leecframs.ie from 27 April 2007. Comments are invited on the scope and content of this report until 25 May 2007 and can be sent via the feedback form on our website, by email to our project email address leecframstudy@opw.ie, or by post to the following address:

Project Manager
Lee CFRAMS
c/o Halcrow Group Ireland Ltd.
3A Eastgate Road
Eastgate
Little Island
Co. Cork
Telephone: 021 4524418
Fax: 021 4524419

We would like to thank those organisations and individuals that have contributed to the production of this report by providing data, responding to our initial consultation and/or attending our scoping workshop and members of the general public who attended our Public Information Days in December 2006. Your views have informed the production of this report and the ongoing development of the Lee CFRMP.